



MURIWHENUA INCORPORATION

ANNUAL REPORT



2025

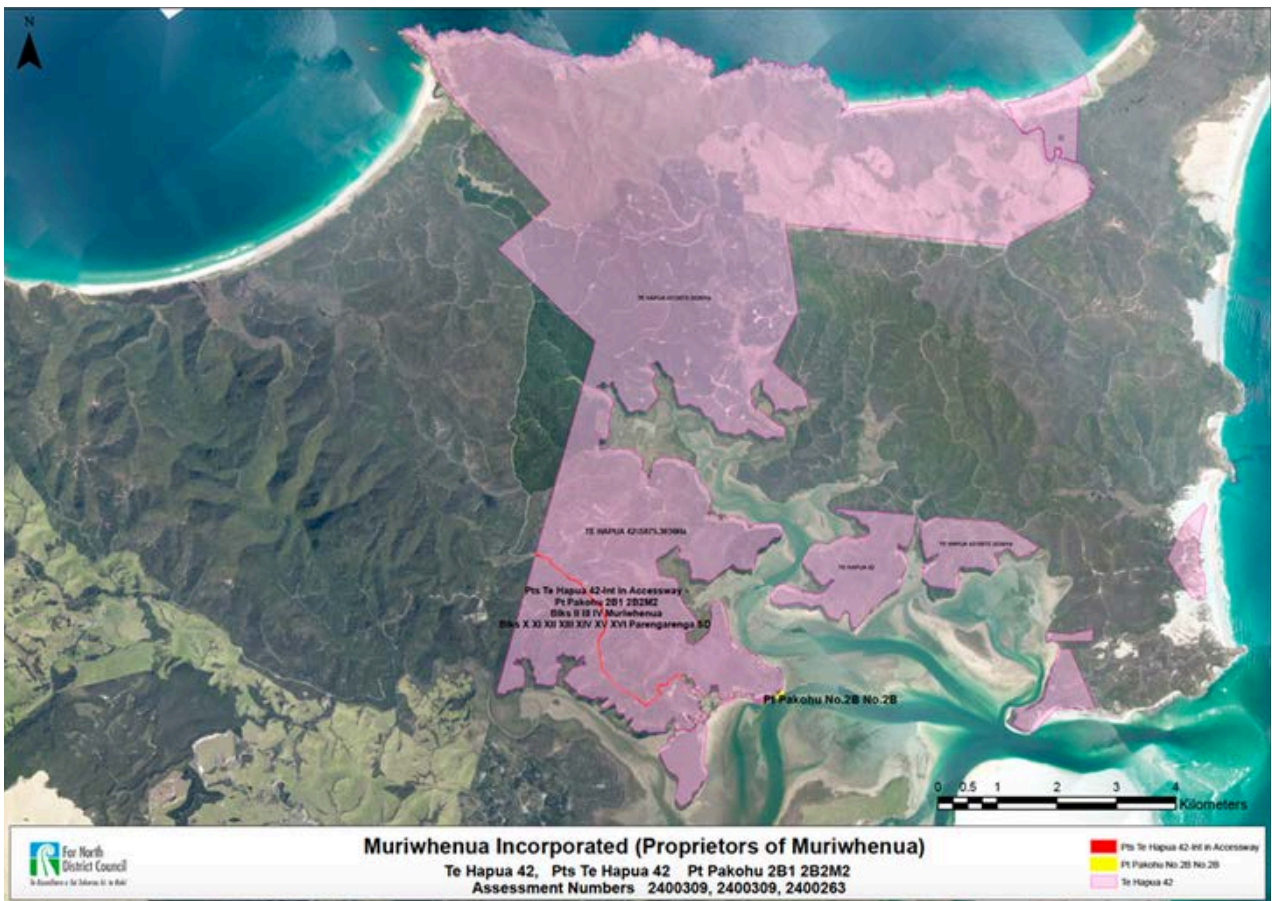
Contact us muriwhenuainc@gmail.com



Heamana Ripoata 2025

E ngā mana, e ngā reo, e ngā rau
rangatira mā, nei rā te mihi Nau mai
haere mai ki te Hui a Tau o Te
Kaporeihana o Muriwhenua

Tuesday 4th March 2025 signalled 60 years since the original entity named Te Hapua 42 was incorporated. The later name change to Muriwhenua Incorporation has been retained as we continue to honor the deeds of our tūpuna who saved our whenua from land loss due mainly to Crown policies, at the time. The whenua shown below has never left the kaitiaki of the people.



In many ways issues/times have changed dramatically, in others they remain the same. The number of whānau wishing to return 'home' to where "Nanny/Nana and Pāpā" were born and/or raised, continues to grow. The committee is increasingly required to ensure the whenua is managed in a fair and balanced manner to meet all needs including for example housing, employment, biodiversity and infrastructure, including water.



As a Māori Incorporation, committee roles are unpaid and voluntary, there are no payable meeting fees, however reasonable travel expenses are remunerated. We do our best with the little resource, human, physical and financial that we have available, however this is changing as demand for the above increases.

We are aware of the advancing need for balanced growth.

Due to the majority of our assets held in corpus lands, MI has limited investable equity. This necessitates a deliberate and measured approach to growth, prioritising partnerships that leverage external capital, expertise and relationships to generate cashflow.

The Incorporation will maintain a balanced portfolio over the next 10 years, carefully selecting assets that align with its values and capitalise on market opportunities.

By strategically partnering with others, Muriwhenua Inc can share risks, access external capital and accelerate its growth trajectory while preserving its taonga whenua (land and treasures)

At September 2023 most of MI's assets valued at \$7million are held in property, plant and equipment. Valuations of all assets including taonga whenua have not been undertaken recently and with this action planned for 2025, the real value of the Incorporation's portfolio will be disclosed.

This will require a shift to targeted, remunerated roles with clear accountability and reporting practices to the Committee of Management, which will ensure alignment with the Incorporation's Strategic Priorities.

The committee is aware that a new generation with a range of innovative skill sets awaits and we welcome their input and voice. Our position remains the same; our tūpuna were our "Land Savers" the Committees of Management past and present have to date, taken the next steps to protect and lay the foundations of growth, for the future generations.

Ka Pū te Ruha Ka Hao te Rangatahi

Aku mihi mahana ki a tātou katoa, nā,



Marama Pohatu (Rapata Hoterene)



1. VISION & STRATEGIC PRIORITIES

In January 2024 the Committee agreed to Strategic Priorities based on a range of stakeholder voice from for example, past and present AGMs and Committee Monthly Minutes, Hui, Wānanga as well as Kuia, Kaumatua kōrero from over the years, to give effect to our Vision and Purpose.

It is on the these priorities that we focus our decision making today, to ensure we retain the cornerstone and aspirations of those voices.

VISION & PURPOSE

Enhancing the aspirations of the Muriwhenua Incorporation shareholders past, present & future by creating development opportunities with cultural, economic, environment & social outcomes"



STRATEGIC PRIORITIES

Development of Human Resources & Office | Te Taiao | Regulations & Compliance | Hōnonga NNoMT, TUPR, MTCT

Actions

- Need to create one page position paper outline around each priority
- Create and action plan for each priority
- Develop a dashboard, that is shared to CoM and can be filled out in real time so we can report back easily in meetings

Our Current Day

- No current operating office or staff
- Multiple assets, but cash poor
- Lack of infrastructure
- Management & protection of our whenua & its ecosystem
- Unique landscape that is desirable for many

Our Bridges

- Muriwhenua Tika Charitable Trust
- Te Upoko Puriti Rawa
- Ngā Ngāhere o Muriwhenua Tika
- GHA - Services
- Spatial Planning
- Strategic relationships

Our Barriers

- Lack of office, infrastructure and staff and money to employ
- Isolation in our rohe: Utilities to our whenua
- Endemic Species
- Shared Availability
- Capacity & capability - upskilling

2. GOVERNANCE TRAINING & IMPLEMENTATION

Navigating the pathways to success is not always straight forward with changes in a) government policy and priorities, b) the global economy c) committee member and shareholder voice.

In 2024 the Committee was most fortunate to receive funding from Te Puni Kōkiri to undertake a range of long term and sustainable development skills including Governance Uplift Training, provided by GHA Accountants and Management Consultants. Targeted governance and business advice, required the committee to not only challenge and extend our own thinking, capabilities and capacity but to also deepen our understanding of how we might best achieve a balance between compliance and regulation while developing the asset base in our preferred manner, including however not limited to; kaitiakitanga, tūāhono, mana motuhake, whanaungatanga, aroha.

A Strategic Investment Policy and Objective Plan (SIPO) was completed in December 2024, as part of the development.

"With a strategic focus on asset productivity and liquidity Muriwhenua Inc is well positioned to optimise its significant assets and bolster financial performance and future resilience"

"Muriwhenua Inc recognises the crucial role of Strategic Partnerships eg Commercial, Government, Community, Hapū, Māori Land entities and Iwi, to navigate current and future challenges, fostering innovation and ensuring sustainable development"

"Our Values will guide us to invest in ways that will honor our taonga and protect our environment for future generations"

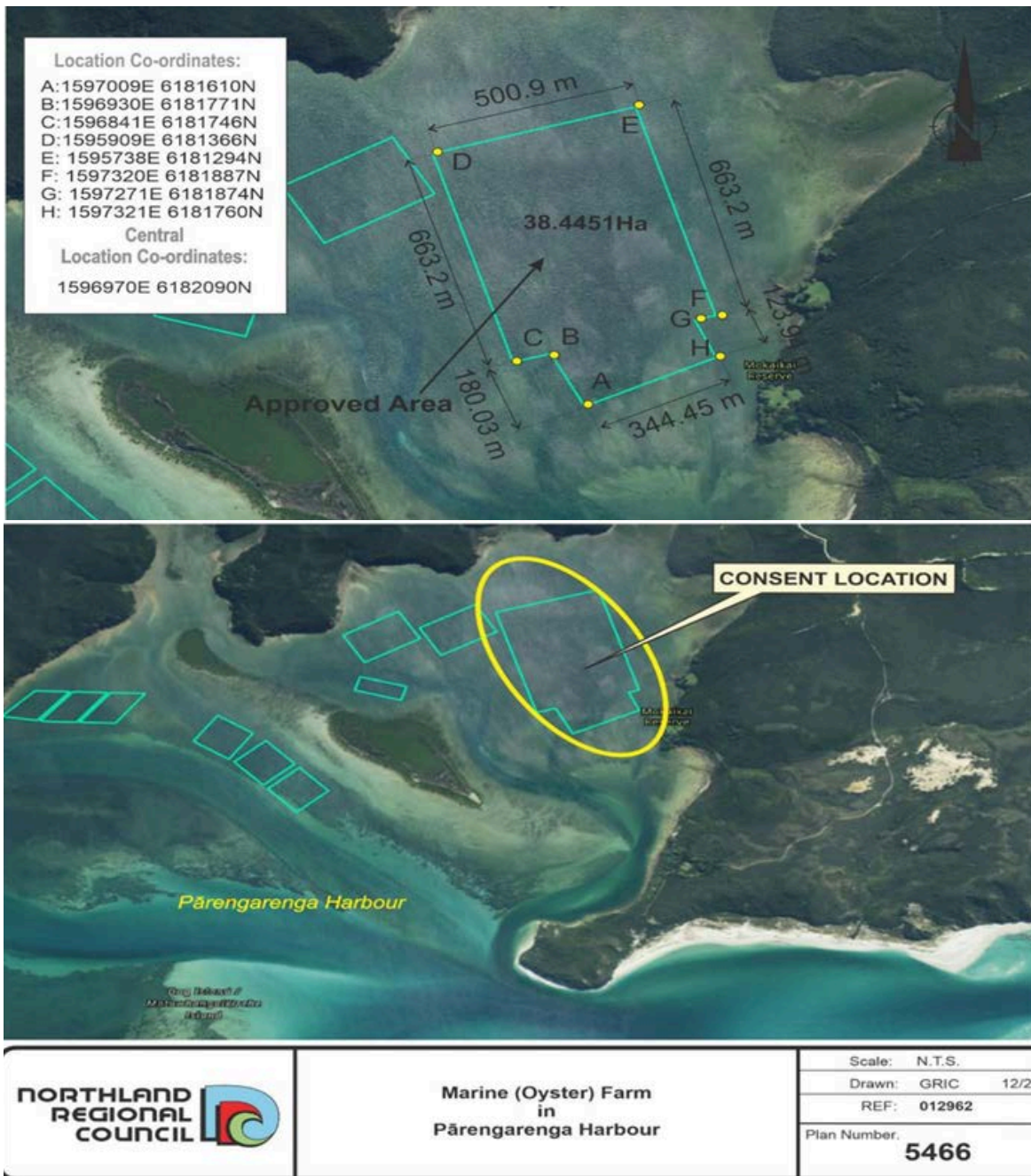
We acknowledge both TPK and GHA for their ongoing support to now embed our Strategic Investment Policy and Objective Plan in 2025.



3. BUSINESS

i) AQUACULTURE | Ngā Rawa Moana Ltd

Our 38 hectare Coastal Permit expired in December 2024 after 30 years. A further aspect of GHA support, provided sector expertise to craft a renewal application, which after much work Northern Regional Council (NRC) advised us in late December 2024 of a successful renewal for a further 25 years. We are currently working with a number of entities to create local employment, develop our capacity and capability to eventually manage ourselves, along with a reliable income stream.



ii) FORESTRY | Ngā Ngāhere o Muriwhenua Tika

INTRODUCTION

I commenced my role as the Forest Manager with Nga Ngahere O Muriwhenua Tika (NNOMT) on 3 July 2024. Having worked across all levels of Forestry – from planting, pruning and thinning, I bring a wealth of experience and industry recognised qualifications, including multiple forestry tickets and a Level 4 Certificate in Health & Safety. As a descendant of Ngati Kuri, I am committed to sustainable forest management that benefits both the environment and future generations.

OPERATIONAL OVERVIEW

Upon joining NNOMT, I oversaw three harvesting crews, a roading contractor, and a planting crew. The majority of whom are of Ngati Kuri descent, reinforcing the organisation's goal of supporting local employment and expertise within the iwi.

COMPLIANCE AND ENVIRONMENTAL STANDARDS

One of my initial and most pressing challenges was addressing non-compliance issues with the National Environment Standard. I worked closely with the Northern Regional Council representative – who is also of Ngati Kuri descent – to rectify these matters. Over a four-month period, I led efforts to bring the forestry operations back into compliance, successfully averting a potential shutdown of the forest harvesting operations. Following the latest inspection, NNOMT now meets all required environmental standards, ensuring the continuation of operations.

HARVESTING STRATEGY

In November 2024, I made a strategic decision to reduce the number of harvesting crews from three to two. This adjustment ensures a sustainable, long-term harvesting plan that maintains forestry work consistently rather than experiencing periods of inactivity. This decision will help maintain employment opportunities and productivity for many years to come.

MARKET AND CUSTOMER RELATIONS

NNOMT currently supplies six key customers with harvested wood. Over the past five months, I have worked to strengthen relationships with these buyers ensuring reliable sales and stable revenue stream for the forestry operation.

HEALTH & SAFETY

Health & Safety remains a top priority under my leadership. Monthly audits are in place to assess compliance and implement necessary corrections. Additionally, near-miss incidents are reviewed at monthly board meetings, fostering a culture of continuous improvement in workplace safety.

CONCLUSION

I am honoured to serve as the Forest Manager for NNOMT. My goal is to leave behind a legacy of sustainable forestry, ensuring that future generations inherit a stronger, healthier forest than in the past. With a focus on compliance, reforestation, sustainable harvesting, and safety, I am committed to guiding NNOMT towards long-term success.

by Eliza Waenga



During 2024 NNOMT was pleased to offer Sponsorship to:

Te Hapua Sports and Recreation Club

- Lighting Posts for Grounds
- Rob Noho: Harvesting of posts
- Forresters Cartage: Transport to and from Mt Pokaka Mill in Kerikeri
- Mt Pokaka Timber Products Ltd: Preparation and treatment

Te Hapua Junior Rugby

- Bus Hire to attend Northland Kauri vs Bay of Plenty and Northland Taniwha vs North Harbour games in Whangārei

Seeing our very own Nora Maaka, Kredence Brown and Heremaia Murray on the field was super exciting!

*"Your support was very much appreciated, all our kids will never forget their trip to Whangārei on a big bus all together - Thank you for making this possible for our teams".
(THSRC committee member)*

"This reminds me of when our seniors got to go play finals on Okara Park there was no one left behind ". (Hau Kainga Voice)







iii) TOURISM | Ngā Rawa Tūruhi Ltd

Waitiki Complex

In December 2024 a Feasibility Study was completed by GHA Management Consultants with funding from Northland Inc. We are currently exploring potential support from both a product development perspective and connection into the wider tourism network in the Far North, to ensure we best leverage any investment into Waitiki Landing.

In the meantime we are happy that Ngāti Kurī Facilities Team were able to manage the accommodation space from November 2023 to date.

Calls for Expressions of Interest for the leasing of the shop, and restaurant were unfortunately, unsuccessful.



iii) Muriwhenua Tika Charitable Trust | MTCT

The current Trustees are Marama Pohatu, Renata Kahuroa, Kimiora Brown, Margaret Taurere and Nassah Rolleston-Steed.

Since its establishment an IRD number has been issued for the Trust and a banking partner was secured in February 2025 with a bank account in the process of being established.

To date the Trust has not applied for or received any grants, or other charity funding.

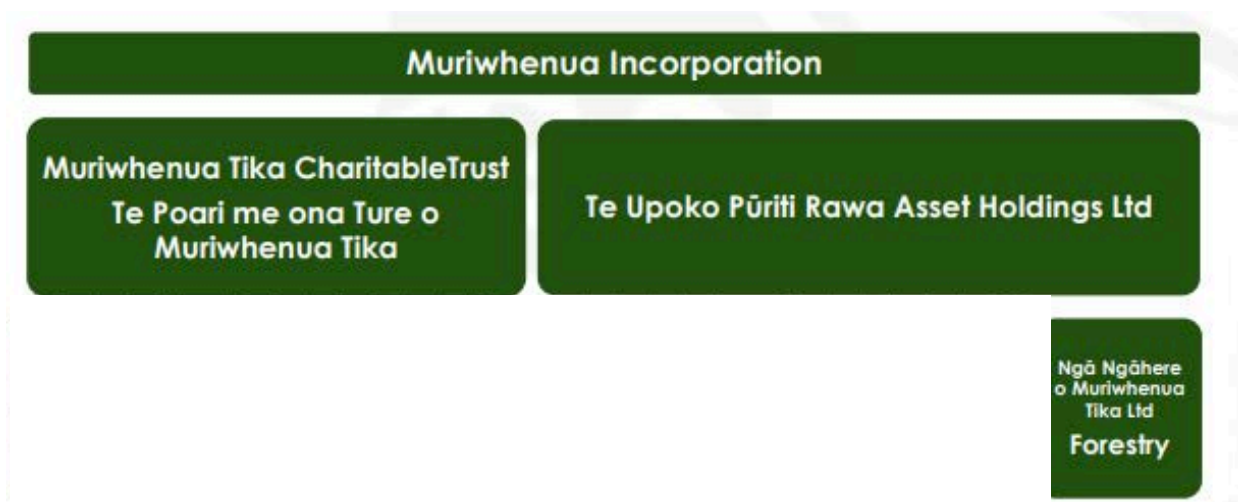


Figure 1 - Muriwhenua Entities

Of the above, the entities shaded dark green are currently in existence:

- Muriwhenua Inc.
- Muriwhenua Tika Charitable Trust (a charitable entity registered with Charities Services)
- Te Ūpoko Pūriri Rawa Asset Holdings Limited
- Ngā Ngāhere o Muriwhenua Tika Limited.





4. TE HAPUA PAKAINGA

The community of Te Hāpua is vulnerable to rising sea levels. We stand to lose significant taonga, including our wāhi tapu, our whare whakamoemiti, our whare kōhanga reo and our papakāinga.

Our 2023 our Research Project funded by Deep South National Science Challenge titled "He Whakaneke a te Hāpori o Te Hāpua ki Tētahi Ara Haumarū" drew on the knowledge of our living kuia and kaumātua, as well as those who have passed on, to create a proactive climate adaptation plan. This research examined the possibilities for, and the tikanga surrounding, relocation.

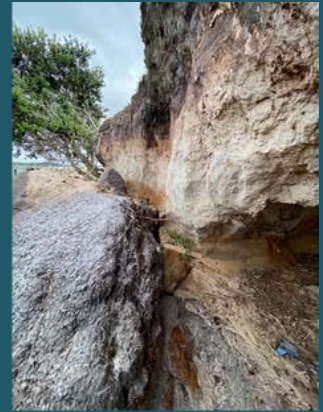
As seawater levels rise, our whenua diminishes. Our whenua is our connection to whakapapa, our mana, our kawa and tikanga, our reo and our Tino Rangatiratanga. Many of our kuia and kaumātua in Te Hāpua and the Muriwhenua Incorporation have passed on. But significantly, they left behind newly discovered written records, observing sea level rise as well as other changes in coastal and marine patterns, in drinking water sources, and on our pātaka kai. They also made sketches for potential relocations to higher ground.

In May 2024 we were invited to present our research findings including our response during severe weather events of 2023 at the NZ Stormwater Conference. We shared how Climate Change along with Environmental Sustainability, feature as key decision drivers as we work alongside whānau, hapu and iwi to realise the potential and aspirations of past, present and future generations.

Our papakainga development targets current whānau living in Te Hapua, particularly those whose homes are at risk from rising sea level.



In July 2024 staff from Te Tūāpapa Kura Kāinga – Ministry of Housing and Urban Development (HUD) made a site visit as part of their review of funding applications, to view our planned Emergency Housing and Papakāinga Developments. We continue to collaborate with contributors in this currently competitive space.



i) LICENCE TO OCCUPY (LTO)

The Spatial Planning process is continuing and as a result the ongoing pause of LTO application decisions, as we await the above Housing decisions for Te Hapua hau kainga.

Our next step is stakeholder input with a range of hui and other opportunities to be offered to gather voices for the Spatial Plan.

Please view our Social Media page for further information of dates and venues. A review of existing LTO holders to ensure we have the correct information and documentation to note with the Māori Land Court (MLC) has commenced.

A review of unapproved structures and occupations also continues, to ensure an equitable process for all, as we continue to receive a significant amount of applications from whānau who wish to reside in Te Hapua.

A reminder that a Transfer of Shares may be applied for by completing the appropriate form, available by request from muriwhenuainc@gmail.com. If the shareholder has passed on, an application to the Māori Land Court is required



ii) WATER BORE

Muriwhenua Inc. has worked with Te Puni Kōkiri for the past several years, to achieve a Drinking Water Production Bore in Te Hapua - the first supply ever - for hāpori use.

We have in place the bore, fencing, tank, solar power, pump plus required NRC consents.

The site was identified from several kaumātua/kuia voices including written sources and is also the site of our planned papakainga build.

The intention for the bore is to provide drinking wai to Te Hāpua hau kainga for residential use, as well as including Te Hiku o Te Ika Marae, at no cost.

While we navigate the housing build with associated reticulation, to allow hau kainga immediate access to the wai, we decided to install a tank from which, supply will be provided. A paid role for the distribution, to ensure our intention is adhered too, is being created and will be advertised.

As a now Drinking Water provider, to meet regulations, we require funding and await an application outcome, to craft a Water Plan along with the installation of a Filtration system. Once in place we shall hold a whakatau to bless and celebrate.



5. TE TAI AO

a) Currently MI does not have a Freshwater Vision or Plan. In response to this gap we are working with Northern Regional Council to apply to the Environmental Monitoring Fund.

Along with the development of a Freshwater Vision and Strategy, a Catchment as well as a Freshwater Monitoring Plan will be developed.

Strengthening our understanding of compliance issues including sedimentation and slash in our forestry operation, as well as the impact of onsite wastewater discharges on freshwater flows in and around our papakainga, will be a priority.

A series of hui will be held to gather stakeholder voice to ensure an informed plan is crafted to enhance and care for this critical space for current, as well as future generations.

We acknowledge the support and guidance of Troy Brockbank; Te Mana o Te Wai Lead @ BECA and April Nordstrom; Kaitātari Kaupapa wai Māori at Te Kaunihera ā rohe o Te Taitokerau (NRC) in this space.

Sensitivity: General

Muriwhenua Inc

Vision: Enhancing the aspirations of the Muriwhenua Incorporations shareholders past, present and future by creating development opportunities in cultural, economic, environmental and social outcomes

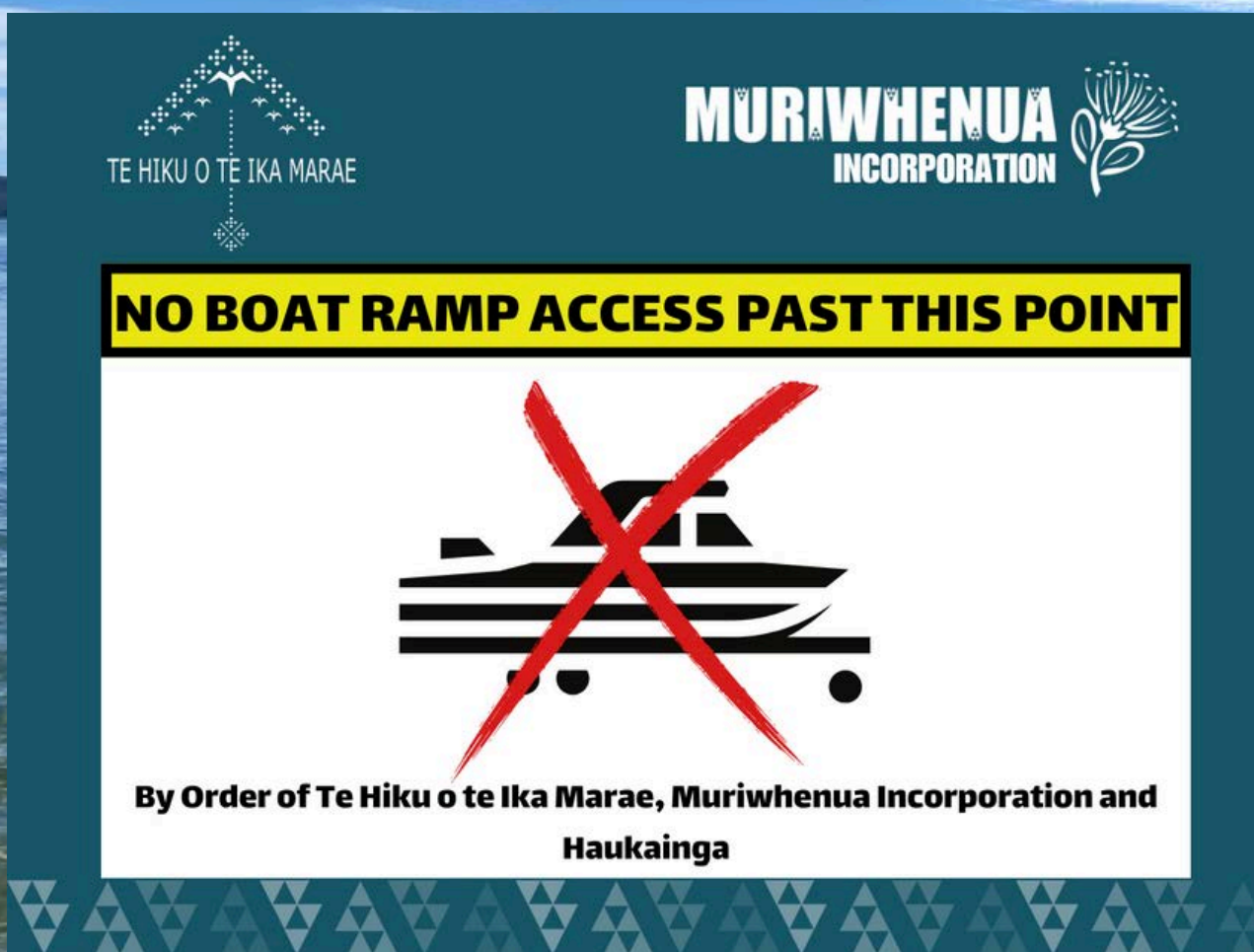
Project: Develop Freshwater Vision & Strategy +



b) RESTRICTED ACCESS TO PARENGARENGA HARBOUR

In October 2023 MI collaborated with Te Hiku o Te Ika Marae and Te Hapua Hau Kainga to restrict access to vessels which were not hau kainga owned, from launching and landing across whenua managed by MI, in Te Hapua. This action was in response to the possible threat of Caulerpa and other invasive weeds on the kapata kai.

Signage has been erected on entering and within Te Hapua



c) KAITIAKI MŌ TE TOHORAHA

In late October 2023 a Parāoa (Sperm whale) gifted the name Ngamaru, by our kaumatua Kereoma Noho, washed ashore at Kārerewaka. He was one of, if not the biggest to come ashore in our rohe. MI collaborated with the Ngāti Kuri Tāiāo and 4th Generation Teams as well as DoC, to remove and bury the carcass, rather than a full harvest to avoid contaminating the moana. The jaw along with the niho were retrieved and we are thankful to NKTB for allowing their burial at Te Paki, until such time as retrieval is undertaken. We were also very grateful to harvest a lot of spermaceti from Ngamaru which will be utilized as rongoa for our Kauri.



d) NGĀ WHENUA RĀHUI

Simon and Dan Job Suseco Worx continue as our contractors implementing the agreement to manage our Kawenata.

Approved Operational and Management Plans were crafted in consultation with the Committee, within which a priority to grow the capacity and capabilities of hau kainga is a priority. A post covid lag of checks and replacement of damaged traps has also been completed.

Fallen trees, pigs, cattle and horses continue to impact the pest control's goal to better protect the unique and rare biodiversity within the Kawenata, including our Rata Moehau and Pupu Kōrari. The committee has agreed to explore strategies to increase our management of these impacts. In 2019 we increased the size of the Kawenata to include 2 hectares around Te Huka. Since then regular sightings of increasing Pupu Kōrari numbers have been recorded.



Live flax snail found when clearing track Te Huka- Muriwhenua block.
(October 2024)



Muriwhenua block trapping network –Pakohu September 2024





e) KAPOWAIKUMARA GARDENS

Through our TPK Water Bore collaboration, MI was invited to join a Ministry of Primary Industries (MPI) Māori Agri Business Horticulture project. We chose to explore the reinstatement of the Kumara Gardens which were active in the early to mid 1900s at Kapowairua, at or near the original garden site. A Water Flow monitor is in place to provide clear data on the feasibility of this outcome. Many if not all whānau will have shared kōrero and memories of this haerenga, travelling to and from Te Hapua by bullock teams, horses – if they were lucky – we understand that waewae express was also a mode of travel! Many whānau retain names, kōrero and whakapapa associated with this annual event.

f) Wilding Pines

Unlike well-managed plantation forests, wilding pine infestations are rarely a usable resource. They increase the intensity and hazard of wildfires, smother native undergrowth, and reduce available ground water.

A handful of wilding pines can spread their seeds on the wind for miles.

We are pleased to receive funding from NRC to manage the removal of this menace on our whenua.



6) MLC INJUNCTION

During 2024 an application was made to Māori Land Court for an Injunction against Muriwhenua Incorporation regarding Land Access. Following discussions, an outcome was agreed to, which resulted in the the application being withdrawn.

We acknowledge our long standing legal advisory of McCaw Lewis Lawyers for their ongoing professional guidance.

7) COMMITTEE OF MANAGEMENT ELECTIONS

Ten nominations were received for:

1. Jerry Pineaha Brown
2. Kimiora Jacqueline Brown
3. Michael Stuart Albert GLASGOW
4. Johanna Maaka
5. Brad NORMAN
6. Lance NORMAN
7. Nassah ROLLESTON-STEED
8. Wiremu SMITH
9. Margaret Merimeri Taurere
10. Allan WELLS

Please see attached Candidate Statements for further information.

8) CONTACT DETAILS UPDATE

If you have a change of contact details, including email - please whānau advise us at muriwhenuainc@gmail.com or 09 409 8253, to ensure communications are enabled. Due to increasing postal costs and reliability, email is a preferred mode of communication

10) FINANCIAL STATEMENT

As these are not available at time of going to print, hard copies will be obtainable at the AGM for the financial years ending 2023 and 2024.

Shareholders may also request a copy by email from muriwhenuainc@gmail.com





Muriwhenua Incorporation Annual General Meeting AGENDA

10.00am 15 March 2025
Houhora Fishing Club
4046 Far North Road Houhora

- 10.00am 1. Moemiti/ Mihi
- 2. Apologies
- 3. Obituaries

- 10.30am 4. Confirmation Annual General Meeting Minutes 2023

- 10.50am 5. Chair's Annual Report
- 6. Financial Statement

- 11.45am 7. General Business

- 12.30pm 8. Management Committee Election Results
- 9. Close AGM

- 1.00pm 10. Lunch





Muriwhenua Inc AGM Minutes

28th October 2023

10am

Agenda

Whakamoemiti Whakatūwhera: Akonga Murray Dickson

Mihi: Member Jerry Brown

Mihi tautoko and standing orders: Heamana Marama Pohatu - Tēnā koe Mr IT, for providing the service for our whanau to be able to join online also. A mihi and thank you to my own whanau, particularly my moko for allowing me to be here. Acknowledging our Tūpuna who incorporated this space, thank you to Murray for our whakamoemiti this morning. Reminding all that we are online also and whilst we welcome whanau voice during the AGM, one speaker at a time please. Be mindful of each other and respect each other and we will not tolerate abuse or violence.

Apologies: Josephine Nathan (nee Everitt), John Brown, Rore Brown, John Cook, Denis Cook, Valerie Marama Brown, Pikiteora Moeau, Rozita Leoni, Karyn, Kath Petera, Henry Abraham, Jen Abraham, Betsy Young, Hayley Tobin, Kimberly Tait, Shannon Desmond, Rhonda Lelievre, Eti Wynyard, Pawi Wynyard.

Motion: to accept the apologies	
--	--

Moved: Huia Cooper	Second: Dolly Desmond
---------------------------	------------------------------

Obituaries: Wayne Brown, Bruce Ngauma, Jimmy Norman, Jane Iota (nee Marsh), George Noho, Waitai Noho, William Wino Waenga, Whitiara Abraham, Neta Tavita (nee Norman), Noble Tahitahi, Karnin Ahorangi Petera, Duncan Kapa, Tei tei Abbot, Douglas Lloyd Brown, Vince Heperi, Ans Westra, Willie Wiki, Titewhai Harawira, Jean Tahitahi, Percy Urseck, Titi (Sid) Waitai, Lena Goldsmith, Emma Wiki, Rima Wiki, Herbert (Bulu) Kapa, Edward Subritsky, Queen Elizabeth II, Nita King Godfrey, Anne Heka, Pineaha Murray, Henry David Kaaka, Wikiteora Matiu, Harerangi Meihana, Dame Aroha Reriti-Crofts, Joe Hawke and Bob Wells.

The chair asked for a minute silence in honour of those that have passed on.

The chair then advised of a shuffle of the agenda to address the Annual Financial statements first. The overall feedback from PKF, given the global economy and the surrounding issues is that it was a positive report, even with the loss. It was still positive in the current climate.

Motion: to table the Annual Financial Statement Report be received for discussion	
--	--

Moved: Hine Lelievre	Second: Huia Cooper
-----------------------------	----------------------------

From the floor: a lot of people did not have the report in front of them, so copies were handed out to shareholders and a few minutes given for reading.

The chair announced the notice dated 25th August, that we did not receive sufficient nominations for the voting process to take place. Election services declared that the two nominations were successful for Allen Norman and Marama Pohatu and we are carrying one vacancy on the CoM.

From the floor: the communication from the CoM has been slacking as had not seen anything for nominations and only heard about the Hui yesterday.

The call for nominations were published in the newspaper and on Muriwhenua Incorporation facebook page. It had been shared on several pages including the Te Hapua Haukainga page. The Chair noted that all the communications and voting is now handled by the Election services, and it doesn't come through the CoM we moved to that process via resolution. There are no proxies as it is all done online for your voting.

From the floor: Queried the amount heading Sand Safaris Mt Ruapehu

The secretary advised this is a part of the Petricevich Buses ownership and they also trade under Sand Safaris. The Chair reaffirmed the MI is a 25% shareholder in the Sand Safaris Mt Ruapehu company.

From the floor: Are we getting anything from that?

The Chair advised that tourism has been on the decline since Covid but we are looking at avenues for a return in this space for our 25% shareholding.

Motion: Move that Annual Financial Statement Report be passed		CARRIED
Moved: Huia Cooper	Second: Waitai Petera	

Previous Minutes

Ngā Ngāhere o Muriwhenua Tika

Being able to report that Muriwhenua Inc now own the trees in Te Hapua after seven years of negotiations and directives given from our shareholders in past AGM. In February 2023, we signed an agreement with Summit Forests to buy back the trees in our Number 1 forest, previously known as Te Hapua. We also welcomed Ken Palmer as the first Manager of our forestry estate, Ngā Ngāhere o Muriwhenua Tika, which includes Te Hapua, Shenstone, and Te Mingi forests.

Sam and Marina Yates of Yates Forest Harvesters Ltd began our harvest in April 2023. We're focused on building management, governance, market, and research capabilities, with support from OneForest, Summit Forests, and other partners.

Goals:

1. Full ownership of both the land and trees returned to Muriwhenua Incorporation.
2. Permanent, full-time local employment at all levels, including management and governance roles.

From the floor: Part of this when it starts, suggest that we should be looking at the final product not just the raw product being shipped off to other rohe, higher return and more job opportunities.

The chair supported this and advised it is in the plan. There was a lot of criticism if we could operate in this space. We had to do a lot of horse trading. To get the income coming in we have focus on what we have at hand to gain an income. There is a 35-year plan financial and operating had to be forecasted for the banks to buy in. A processing plant is in our shared aspirations. Long term vision jobs, water, houses through all levels.

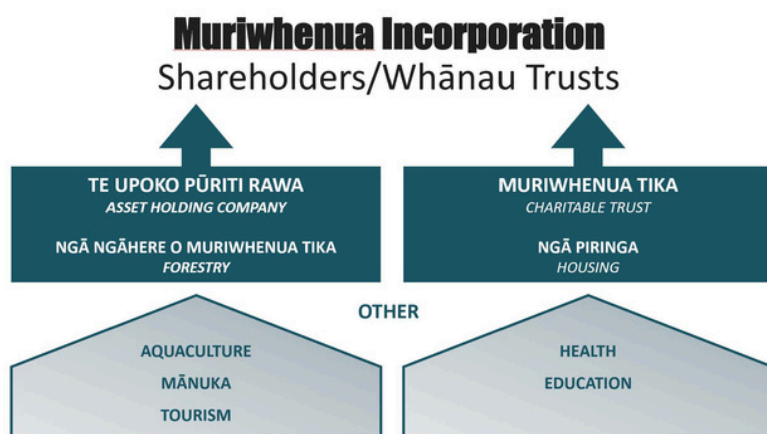
The 2022/2023 period has been a time of growth for Muriwhenua Incorporation, with past efforts starting to show results thanks to decisions from current and previous Committees of Management.

Charitable Trust

Muriwhenua Tika Charitable Trust was registered in 2023, focusing on housing, education, and health for the wider Muriwhenua community. Trustees include Renata Kahuroa, Nassah Rolleston – Steed, Margaret Taurere, Kimiora Brown, and Marama Pohatu. This enables us to receive and apply to more funds and is for the greater good of the well-being of Muriwhenua rohe, not just our shareholders.

Asset Holding Company

Te Upoko Pūriti Rawa was created as a Limited Liability Company, with Muriwhenua Incorporation as the 100% shareholder. Manages the assets of Muriwhenua Incorporation, sitting under that is the Ngā Ngāhere o Muriwhenua Tika. Act as an income driver for Muriwhenua Incorporation where profits will then go through to the Charitable Trust. The Board of directors are only there to set up systems, where as a discussion and call for directors will occur once the systems are in place.



From the floor: The set up is huge and requires a lot of risk management.

Commending us on the restoration of the name Muriwhenua Tika, thanking us for that name and its history.

The CoM gave clarity on the bottom boxes of the above diagram are what we still require the systems to be built ie Health & Safety, financial policies and risk management. Public liability is at the top of our minds always.

From the floor: How do we know that the trees and whenua are safe?

Response from the Forest Manager Ken Palmer. The council conduct regular monitoring and testing, there is also environmental standards that we are required by being an operational forest. Also ensuring that we are following the principles and Kawenata of Nga Whenua Rahui. The chair also advised that we have been invited to partake in a SCION that looks at what is also happening below the ground not just what is occurring on top.

From the floor: Will there be a process for Haukainga to be able to go out the run?

Response from the chair, yes, we still have a permit based access request for all. That needs to be run in conjunction with the operations of the forest. There is a huge health and safety risk and now that

summit is out of the picture we hold full liability for any incidents in the forest. This would be managed through the Forest Manager Ken, via email or phone call. We are looking into new modern technology systems for this lock.

From the floor: Is there an easier way that does not take so long for us to get access to our beaches out the run?

Response from the secretary, yes we are working towards Bluetooth systems for our own to hold their own access. This is important to run alongside the work of the Forest Manager to keep our whanau safe when going out there but also our workers. The new system aims to make this a seamless as possible and ensure that we can meet all compliance requirements and maintain our safety.

From the floor: Paua Reseeding, what are we doing here? Is it still going ahead?

Member Jerry Brown spoke to the matauranga still being here, however this has been pushed to the side with the Housing, Forestry but what we really wanted to do was set up a Paua Farm to look after all our stocks in any water abutting MI lands.

From the floor: That's a lot of money and spend in this, with nothing further occurring in this space or letting it fall to the wayside. Why aren't we continuing with the Paua Reseeding?

Response from the chair: The training is another part of that as well. To enact it would need to be another set of funds. Response from the secretary: This was a funded project; we applied for the research to be conducted and were granted the funds to do so. We never lost any money or gave any money for this to occur. This is why the consultation fees are high, we were granted the funds for this consultation to happen there has not been any spend from MI we are recipients of the grant and now hold the research and data for this project. It was about Haukainga and bring our own in to do that work and mahi and allow them that opportunity. It's not that it is completely off our agenda, we knew how great of an opportunity it was for us to get back the ownership of that forest. Also, the prioritisation of the possibility of getting more houses in Te Hapua. It comes down to resources and CoM resources. We are still standing with one vacancy whanau.

Motion: Move that the previous minutes for Annual General Meeting 2022 be accepted as true and accurate

CARRIED

Moved: Robyn Norman

Second: Ngaire Norman

The Chairs annual report was now up for discussion.

Water Production Bore

After successful drilling, we found a potable water source. We are now installing a pump and solar power to provide fresh water to the hau kainga community.

Member Jerry Brown spoke about there being enough quantity to service our community. The Chair spoke to the need for a rising rays pump, all the equipment etc is what we are waiting on. Again another longer drawn out process. The long term plan would be for us to be able to turn on the tap and have water not dependent on rain catch. In 2018, Hone Harawira invited us into the space with Te Aupouri, Parengarenga Inc and Ngati Kuri for a scoping water report. Off the back of that came the funding from TPK for this current project. Water has been a need within our hapouri forever and we hope that this will now be the solution for our water needs.

From the floor: How many meters does the water bore go down?

Answer: 126 meters

From the floor: What about the other sites that were explored? Why were they not followed through?

Member Jerry Brown there just was not enough water flow in Paparei, we hoped everyone expected that site to be the 'one' but it just did not produce enough water flow. There was a lot of rock in there at different stages of the drill.

From the floor: Query from the previous minutes regarding the LTO qualifiers? Where did this happen?

Response from the chair: In 2020, following a Special General Meeting held at the Marae, a review was conducted on the LTO criteria. There were multiple responses from that hui where no consensus was reached. So an online ballot was held with multiple options that were given from our LTO review to confirm how much shareholding was required to apply for an LTO and how much land should each whanau be eligible for ie the 1 acre per original shareholder. The whanau trust can apply for an LTO also.

Response from the secretary: This one acre did not take into account any LTO's, this was a directive from the shareholders, and we have enacted their directive, there is a lot of issues especially a whanau with large numbers, that is also a five-year review term on this. We knew that this might not be the best solution and could become problematic - but we must follow the directive of the shareholders.

From the floor: I want to know how long does it take for a Transfer of Shares to happen?

Response from the chair: In an ideal world 4 – 6 weeks. In current climate it takes longer, we are running with a vacancy currently and before last week two vacancies. Which is huge! This is not making excuses this is the reality and the reason. We are volunteers working after hours in the weekends to get these things over the line. We recognise the backlog and lateness, roughly 10 hours a week commitment from our members.

From the floor: We need to not have to worry about shareholding, we should allow whakapapa to be able to stay on our land. We shouldn't have kids or people disconnected from their own whenua because they do not have as pakeha shareholding.

Response from the chair: Several attempts to interject however the korero still going on in the background, asked to move forward and pass the report.

Response from the secretary: The floor is still with Hine and her motion.

From the floor: All this trustee thing and that, why cant we go back to the old whakapapa model like the old days. You don't need any special language just your whakapapa that's it.

Response from the chair: You can, you can as shareholders you can partition off blocks, you can get rid of the Incorporation. This comes us every AGM. We can't our responsibility is to administrate the whenua. But you as shareholders can, return to a whakapapa system other whanau are in the process of partitioning out under a 2B2AJ. But to dissolve the incorporation and everything that goes with it, only the shareholders can do that. We cannot. You would need to take it further than just suggesting it, if there is enough people that want that haere tonu – but that's not our role.

From the floor: But you would need 75% of the total number shareholders.

Response from the chair: That's why we put the call out to confirm your details. Of the 3802 current shareholders we only hold contacts for around 503. Only 503 people or trusts receive the AGM pack. We have used the electoral rolls, social media we have put it in all sorts of spaces and context trying to get in touch with shareholders. When you do you research into others just about every Iwi, incorporation in the country have the same issue.

Response from member Jerry Brown: The shares = to land mass. Let's say you have 10 shares and it equalates to half an acre. If you pull your shares out and take the half an acre that's it ends of story. Don't come back to us asking for more land, you're finished that's how it goes.

From the floor: But if you live here and want an LTO to actually live here, then you should not be allowing people living in Australia to get an LTO.

Response from member Jerry Brown: That's fair enough.

Response from the chair: But you have not told us or stipulated that they must live in Te Hapua, all you have directed us on is that they must hold one share as a shareholder or a part of a whanau trust. That is another resolution that is required. There are MLC decisions that have been discounted previously as the requirement of having to live in Te Hapua to hold an LTO.

From the floor: My whanau were the same, LTOs were a whakapapa-based assignment, then there was the requirement of needing one share so each of us could get an LTO. I hear the confusion it changed, it changed four times. A lot of us pulled back with the change to allow others to apply. Then you see some that are moving back from overseas and we are still in the same position.

From the floor: What happens to the share for an LTO if someone passes away? Where do you put it?

Response from the secretary: That share still exists under the person that passed away. Until an uri or someone succeeds to that share does it then gets allocated to someone else. We do not hold any shares ourselves in the Incorporation.

Response from the chair: we encourage the whanau to indicate who the LTO should go to. The share allows for the LTO in the Incorporation, but a building or house belongs to the whanau. If you transfer an LTO that is up to the whanau what happens with the buildings. That is out of MI's jurisdiction.

From the floor: There was a time that LTOs were not allowed on the Te Hapua flat due to rising sea levels etc and there is a disclaimer that you choose to go there MI holds no liability, if you cannot get a TP58 etc

From the floor: Is there really a Pakeha doctor from down Rotorua that has shares, are they not making a mockery of our share system?

Response from the chair: it is what it is we cannot do much about it or change in retrospect

From the floor: MLC has a safeguard for these instances now.

Motion: that the Committee of Management put a resolution through to the next Annual General Meeting that a whanau trust is recognised as a beneficiary to apply for an individual License To Occupy and a review of the "one a acre be assigned to each Original Shareholder to serve all their

descendants.”

Note: The CoM needs to seek clarification if this falls under the powers of the Incorporation or not, as it was a resolution and they are binding, but the review term was already set for 2025.

CARRIED

Moved: Hine Lelievre

Second: Majorie Norman

The chair reminded everyone of the need for and importance of serving on MI, succession is important.

The secretary reminded everyone we had three vacancies this year, and there was no contestation these two [Marama Pohatu and Allen Norman] automatically got in.

Motion: that the Annual Report be accepted.

CARRIED

Moved: Huia Cooper

Second: Dolly Desmond

1.15pm The chair with consent of the meeting agreed to break for lunch.

2.00pm The meeting reconvened

The chair gave a mihi to the ringawera Margaret Marsh, Audrey Cook and Shakira Pia for the kai, much appreciated.

From the floor: regarding opening of the Share register, there are other shareholder entities that have open share registers and hoping that Muriwhenua will open theirs also.

Response from the Chair is that we can open the Share register, what you will see is pre 1979 reconciled information. The ideal is that they are reconciled every year. However, the reconciliation of the register is a part of the wider application to the Court around Te Mingi around the shares that are still to come over from Parengarenga Incorporation and being incorporated and some cases returned. Many times people have been charged with doing this task but it was never completed to satisfaction. In 2016, we were given a hurry up by the Courts. We contracted our Lawyers McCaw Lewis all transaction and transfer of shares and reconciliation and submit to the Court which we have done in 2018, we are still waiting for MLC to confirm this and are eagerly awaiting its confirmation. Whanau Trust Beneficiaries and Shareholders are available for viewing. We have put a lot of resource and time into this register and created an online portal for shareholders to have access to. However, we need the confirmation from the courts and the document back before we can activate that.

From the floor: Do we get notified once completion of transfers, successions and matters pertaining to MLC are done by the Court?

Response from the chair: Short answer is no, unless you send a copy to the committee. It is not the practice of the MLC to send us a copy unless we are a named applicant or defendant. The Land Court may contact us for confirmation of Shares or numbers, but it is the MLC's process from there not MI.

From the floor clarity to Query: When applying for succession, the Court requires a Share Certificate, which is supplied by MI.

Response from the chair: Can provide an example of what my happen and we can retrace to help understand and respond to you? Can sense something is not right, but I don't know what it is.

From the floor clarity to Query: I know of an incident, where these orders haven't been sighted by the incorporation and they are working these shares, where the vesting order says something contrary to what is done.

Chair has asked for a further discussion regarding this matter privately, as clearly it would result in a messy share register, but a breach in the entire reconciliation process agreed and would be an example of situation to assist in a resolution. Member Margaret Taurere advised a pathway for an example without breaching confidentiality but the gaps in the process of where it could go wrong.

From the floor: Hitori kōrero of all the hapu and the incorporation. This share system it wasn't so bad a few years ago but because of the settlements. An illegal incorporation set up in 1986 now have 99% of the lands that our tribes had signed off in 1970. Whats been happening over the years is because of the settlements of 90 tribes they have been given authority of certain parts of the lands. But interesting at a Muriwhenua Incorporation hui it is Muriwhenua don't own anything, not the ocean or land. Only saying this as even though some of the cuzzies may have gone and their fish claim. Because of the Kawenata that Muriwhenua was established under the kaitiakitanga of our hapu, pai te Heamana, pai te CoM from 2012 anyway... my interest is to keep things in line we should not be here fighting about shares, we all know it's all of our shares. But we must remember the hapu and the history and that we are the Kaitiaki.

From the floor: Whats happening with Waitiki? We are talking about making money, we know you are talking tourism, we have been in tourism for many years and have been successful. Still been able to keep our doors open. We still have been able to continue doing our stuff. We have been through many things and Covid being the latest. Telling you now whanau we use that as a platform to talk about us not just Ngati Kuri and the impacts to Maori and Tamariki. We put another spin on this that we are good people. The amount of people that come to us for a place to eat, a place to sleep, place to hang out is huge. This complex is not being used for the good of us. I'll run it; I know that it can be done and done really well. This isn't just going to be an asset this is going to be a money-making asset.

Response from the chair: The problem with Waitiki is all that you cannot see, it's the infrastructure, it's the pipes it's the under the floor, it's the big appliances. It's a sad situation. If everyone in the cabins flushes the toilets at the same time, it comes up through the showers that is how bad the pipes are. 2021 post Covid – it was full here over those holidays and the infrastructure could not handle the crowds. In the bigger picture is that it will be the hub again, we continue to work with our networks to build develop this space. As we were directed by our Kaumatua and Kuia in 2018. Water, jobs and homes. This is a part of that plan for job opportunities and tourism. But sadly, it is not happening now, with the need for infrastructure. Watch this space for EOI, as we have reignited this relationship with Northland Inc.

There is no focus on domestic travel from Northland Inc, but the tourism is on the build and it is growing. We know what people want, what they are looking for.

From the floor: Whats happening with Waitiki? We are talking about making money, we know you are talking tourism, we have been in tourism for many years and have been successful. Still been able to keep our doors open. We still have been able to continue doing our stuff. We have been through many things and Covid being the latest. Telling you now

whanau we use that as a platform to talk about us not just Ngati Kuri and the impacts to Maori and Tamariki. We put another spin on this that we are good people. The amount of people that come to us for a place to eat, a place to sleep, place to hang out is huge. This complex is not being used for the good of us. I'll run it; I know that it can be done and done really well. This isn't just going to be an asset this is going to be a money-making asset.

Response from the chair: The problem with Waitiki is all that you cannot see, it's the infrastructure, it's the pipes it's the under the floor, it's the big appliances. It's a sad situation. If everyone in the cabins flushes the toilets at the same time, it comes up through the showers that is how bad the pipes are. 2021 post Covid – it was full here over those holidays and the infrastructure could not handle the crowds. In the bigger picture is that it will be the hub again, we continue to work with our networks to build develop this space. As we were directed by our Kaumatua and Kuia in 2018. Water, jobs and homes. This is a part of that plan for job opportunities and tourism. But sadly, it is not happening now, with the need for infrastructure. Watch this space for EOI, as we have reignited this relationship with Northland Inc.

From the floor: There is no focus on domestic travel from Northland Inc, but the tourism is on the build and it is growing. We know what people want, what they are looking for. I can run Waitiki.

From the floor: I wasn't going to bring it up based on what happened the other night at the hui at the Marae [caluerpa and boat access to the harbour] but it is so important that we protect our harbour from caluerpa, this is a big deal. Because I am coming to feel the need to mitigate caluerpa in our harbour. Wanting to reassure that there is still a way for us the hau kainga, with the Marae committee with Muriwhenua. Moving forward what does that look like? I've been in hui that are a bit scary before, but there should be another way that we could actually get this moving. It is going to take more than a few, I know there is a lot of hau kainga that want to get involved. Can you provide us with some enlightenment as to how we can move forward?

From the floor: Te Hiku o Te Ika Marae Chair – Access was what was being discussed, how can we restrict access to avoid Caluerpa coming from outside boats. No restriction was given to hau kainga or intended to whatsoever! It was just about letting ONLY being allowed access to the harbour. That hui the other night was a collaboration between Muriwhenua Incorporation and the Marae Committee, and the Marae was the venue for the community to tell Muriwhenua and ask Muriwhenua as the 'landlords' for the help they needed to protect the kapata and the asset of our harbour. That was the wish from the meeting that night, which was severely misunderstood. To the point of trauma – it was traumatising. As the Chair of the Marae it hurts that Muriwhenua choose to come here [Waitiki] for this hui as they feel safer here. But after the other nights performance I totally agree, I get the feeling because we know it's ours and we don't want to restrict what is ours, but I believe that we can all behave in way that puts above the animals. To be honest it was that bad. I know you have reached out to ask when is the next... but to be honest I can't put my mind there yet. To see what it looks like as I don't feel safe in having that at the Marae, where I thought should be the safest place for our community. As the Chair I am sorry it got shut down and we couldn't resolve what we went there for but the situation at the time called for it to be shut down.

Response from the chair: Tautoko the response from Marae chair, but the reality is that MI hasn't been able to meet to discuss to great extent. But I am with you, when you talk about being

the Chair of the Marae it hurts that Muriwhenua choose to come here [Waitiki] for this hui as they feel safer here. But after the other nights performance I totally agree, I get the feeling because we know its ours and we don't want to restrict what is ours, but I believe that we can all behave in way that puts above the animals. To be honest it was that bad. I know you have reached out to ask when is the next... but to be honest I can't put my mind there yet. To see what it looks like as I don't feel safe in having that at the Marae, where I thought should be the safest place for our community. As the Chair I am sorry it got shut down and we couldn't resolve what we went there for but the situation at the time called for it to be shut down.

Response from the chair: Tautoko the response from Marae chair, but the reality is that MI hasn't been able to meet to discuss to great extent. But I am with you, when you talk about being traumatized – I am one of them. If I could of driven, I would of driven out of here and I would still be driving. But here I am, I am not going back into that situation again. That was, what does the hau kainga want? As clearly there is issue around boats pulling up and the driver there was Caluerpa. But that space was not ok. You don't get progress out of that, I am ashamed of myself and have a bit of healing to do and that happened at our Marae. I will not want to put myself back in there as it is unsafe for me. What you want to do as a hau kainga as shareholders? That's up to you, we thought if you want signage and put it on MI whenua then tell us where to put it. It was mentioned a roopu has gathered, maybe that is a way forward a working group? The CoM has not had the chance to discuss as we have been focussed on this AGM. I heard it the other night, you don't live here.. everyone knows I don't live here. But the Incorporation is here to support the community, so if you can tell us what's needed we can have a korero and see what we can do. We don't want to be in a place where we are telling you what to do, its ups to you to tell us.

From the floor: We are happy to meet and discuss the needs and keep the lines of communication open with MI. If you are happy to receive, we want your help and want to protect our kapata kai.

From the floor: If we are going to control this we need to find a way to stop others from coming in to the harbour through the mouth as well as ourselves. Don't have the answer, but the urgency is there.

Response from the chair: There is a piece of paper in front of you. Which you can take away with you, in the minutes of 2022 it covered that MI apply for the money that Nga Whenua Rahui applies for and receives the funds directly. Where we are at now: Is developing a management plan. We are in the operation space currently under the kawenata. We have been invited to apply for funding for an environment management plan. We want you to tell us of what we have missed in this space? What is missing from the environment? Let us know and contribute to these plans please.

From the floor: The horses are an issue, there isn't enough grass or water. These horses are being destructive. Not just the horses the cows, bulls. Flounders use to be everywhere when we kids. Mangroves were never here. For the horses that are pests send them down my way there is a freshwater creek or let me know and I can come and collect them.

From the chair: Ecological reports are required for anything. We need to look at the national policy statements. We are waiting on geo tech, engineering, ecology reports for the housing update.

From the floor: Has there been any development of a meeting between MI and NKTB chairs?

From the chair: Yes it did happen.

From the floor: I think it could really help if we got into a partnership with biodiversity, there would be shared data and aspirations with a fast track.

Response from the chair: We have started with the access through an operational forest. Thank you to those that joined online, special thanks to everyone the attended a tinana. Thank you all, we will get our AGM back into sync next year asked for Apotoro Wairua Henare Aperahama to close our hui.

3.33pm Meeting ended

